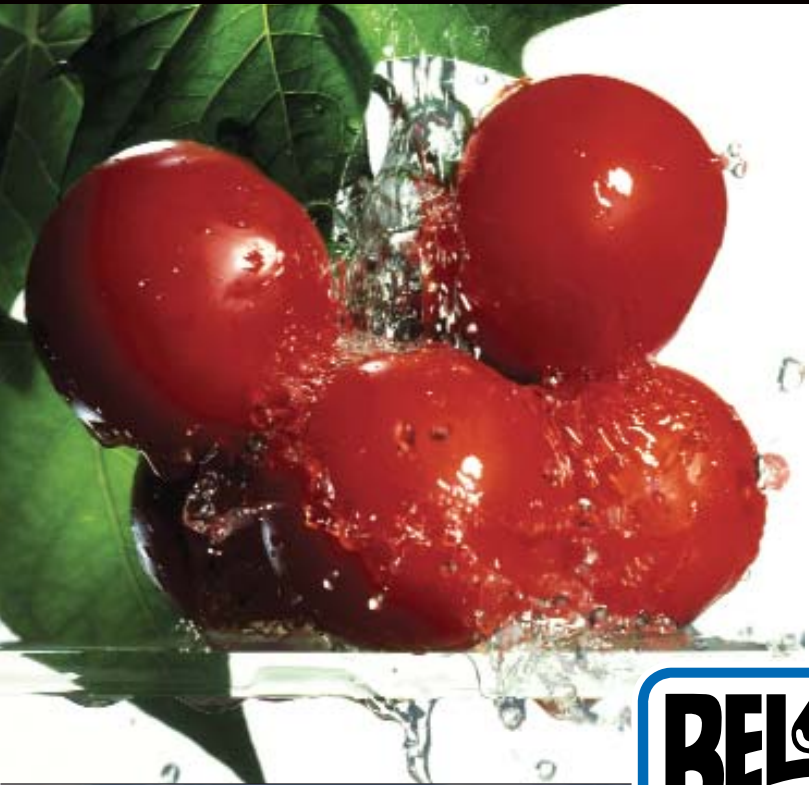


GLOBAL EXPERIENCE PROVEN PERFORMANCE



BEL-RAY® INDUSTRIAL LUBRICANTS



BEL-RAY® INDUSTRIAL LUBRICANTS

BEL-RAY IS... 1000 PRODUCTS... 100 COUNTRIES...

FOR OVER 50 YEARS, from Asia to Africa, North America to Europe, South America to Australia, Bel-Ray products serve the world of lubrication. The leader in lubrication technology, Bel-Ray lubricants have been submerged in submarines to the depths of the ocean floor, traveled to the moon, weathered chilling arctic cold and wet, and defied the harsh desert dust and heat. Bel-Ray research scientists develop our products for a broad spectrum of applications. Our expertise and innovative technology goes into each product. Bel-Ray is your assurance of superior protection and proven performance value.



Everything we do is quality **above and beyond the standard** because our customers' bottom line comes first.

That is the BEL-RAY WAY.



Bel-Ray is an ISO 9001 certified company.



- Bel-Ray World Headquarters
- ▲ Bel-Ray Offices and Subsidiaries
- Bel-Ray Distributors

All Bel-Ray No-Tox® products are Kosher and Pareve.



Canadian Food Inspection Agency

Agence canadienne d'inspection des aliments

APPLICATION

NSF REGISTERED H1 FOOD GRADE

DESCRIPTION

CIRCULATION

BEL-RAY NO-TOX® ANTI-WEAR LUBRICANT SERIES
ISO GRADES: 46, 68, 100, 150

A versatile, general purpose lubricant with unique load carrying film and exceptional lubricity used in hydraulic systems, compressors, air line lubricators, bearings and lightly loaded gears.

PNEUMATICS

BEL-RAY NO-TOX® AL LUBRICANT
ISO GRADE: 22

Designed with air line and pneumatic tools in mind, this versatile lubricant maximizes air tool life while optimizing pneumatic system performance.

HYDRAULICS

BEL-RAY NO-TOX® HD HYDRAULIC OIL SERIES
ISO GRADES: 15, 22, 32, 46, 68

An excellent heavy duty hydraulic and circulating oil with exceptional wear and rust protection for hydraulic pumps, motors and bearing applications.

BEL-RAY NO-TOX® SYNTHETIC HYDRAULIC OIL SERIES
ISO GRADES: 32, 46, 68

A technologically innovative PAO synthetic high-performance, multi-service hydraulic fluid designed for all types of hydraulic pumps and motors.

CHAINS



BEL-RAY NO-TOX® CHAIN LUBRICANT 65
ISO GRADE: 32

A state of the art synthetic chain lubricant with exceptional penetration and anti-wear properties. Used in extremely low temperature applications.

BEL-RAY NO-TOX® CHAIN LUBRICANT 150
ISO GRADE: 32

An exceptional light viscosity chain lubricant for use in low temperature applications offering unparalleled protection.

BEL-RAY NO-TOX® CHAIN LUBRICANT 550
ISO GRADE: 100

An excellent general purpose chain lubricant designed for most applications requiring a medium viscosity oil.

BEL-RAY NO-TOX® CHAIN LUBRICANT 2500
ISO GRADE: 460

A high quality, technologically innovative, semi-synthetic, high viscosity chain lubricant for use in heavy duty applications.

BEL-RAY BAKERYLUBE NO-TOX® AG

A specially formulated oven chain oil for Aeroglide and other bakery ovens offering superior protection and anti-wear properties.

CHAINS (AEROSOL)

BEL-RAY NO-TOX® ANTI-WEAR LUBE 30 AEROSOL

An excellent multi-service lubricant designed for chains and general purpose lubrication. High quality ingredients make this an excellent lubricant. Also available in bulk.

COMPRESSOR/
VACUUM PUMPS

BEL-RAY NO-TOX® COMPRESSOR OIL SERIES
ISO GRADES: 68, 100, 150

Outstanding demulsibility properties in a high performance compressor oil. Designed for rotary screw, vane and reciprocating compressors.

BEL-RAY SC1 COMPRESSOR LUBE SERIES
ISO GRADES: 32, 46, 68, 115*

An exceptional PAO based synthetic compressor lubricant with superior performance designed for rotary, reciprocating and ammonia compressors.

ENCLOSED GEARS



BEL-RAY NO-TOX® GEAR OIL SERIES
ISO GRADES: 120*, 150, 220, 320, 460, 1000

A multi-purpose gear oil with exceptional load carrying ability. Used for enclosed gearboxes and bearing applications requiring mild to extreme pressure protection.

BEL-RAY NO-TOX® SYNTHETIC GEAR OIL
ISO GRADES: 150, 220, 320, 460, 680, 1000

A PAO based synthetic gear lubricant. Designed for enclosed gearboxes that operate under broad temperature ranges with severe service requirements and increased oil changeout.

WORM GEARS

BEL-RAY NO-TOX® WORM GEAR OIL SERIES
ISO GRADES: 320, 460, 680, 1000

A high performance worm gear oil designed for ferrous and non-ferrous worm gear boxes requiring a compounded oil.

BEL-RAY NO-TOX® SYNTHETIC
WORM GEAR OIL SERIES
ISO GRADES: 460, 680, 1000

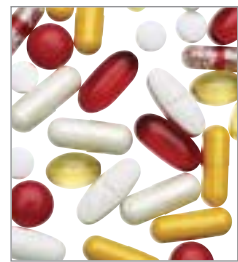
A PAO based synthetic lubricant designed for worm gear boxes that operate under broad temperature ranges and severe service requirements. Excellent anti-wear and long life properties.

OPEN GEARS

BEL-RAY NO-TOX® OPEN GEAR GREASE
NLGI GRADE: 3

An extremely tacky, non-melting, heavy duty open gear grease with a high viscosity base fluid. This lubricant is excellent for applications with slow moving gears and sliding surfaces.

BEARINGS



BEL-RAY NO-TOX® CLEAR GREASE SERIES
NLGI GRADES: 00, 0, 1, 2

A high dropping-point grease with a broad operating temperature range and a proprietary waterproof thickener that doesn't wash out in heavy duty applications.

BEL-RAY NO-TOX® HD GREASE SERIES
NLGI GRADES: 00, 0, 1, 2

White in color, odorless, tasteless, waterproof, heavy duty, this general purpose grease is designed for applications requiring outstanding anti-wear properties.

BEL-RAY NO-TOX® HD GREASE TC SERIES
NLGI GRADES: 0, 1, 2

An extremely tacky version of the BEL-RAY NO-TOX® HD GREASE SERIES. It is rust and oxidation resistant and provides a tenacious extreme pressure film adherence to metal surfaces.

BEL-RAY NO-TOX® SYNTHETIC AC
GREASE SERIES
NLGI GRADES: 00, 0, 1, 2

A PAO based heavy duty synthetic grease, white in color, odorless, tasteless and waterproof. Offers extended service at elevated temperatures.

BEL-RAY NO-TOX® HI SPEED LUBE
NLGI GRADE: 2

A PAO based synthetic grease, white in color, odorless, tasteless and waterproof. Completely lubricates high-speed bearings up to 20,000 rpm.

BEARINGS
HIGH TEMPERATURE

BEL-RAY NO-TOX® HY-LO GREASE
NLGI GRADE: 1

A PAO based fully synthetic grease. White in color, odorless, tasteless and waterproof. Designed for long life applications and broad temperature swings for short periods of time.

BEL-RAY NO-TOX® 1023 SILICONE GREASE
NLGI GRADE: 2

A silicone based grease containing PTFE. This lubricant is extremely stable over wide temperature ranges. It resists deterioration in a number of adverse chemical environments making it an excellent lubricant for chemically challenging applications.

BEARINGS
LOW TEMPERATURE

BEL-RAY NO-TOX® MINUS 90 GREASE
NLGI GRADE: 1

A PAO based synthetic grease with exceptional low temperature properties. It is an excellent lubricant for bearings operating in freezers and chillers.

ANTI-SEIZE
COMPOUNDS

BEL-RAY NO-TOX® ANTI-SEIZE
NLGI GRADE: 1

A superior anti-seize compound, white in color, odorless, tasteless, waterproof and extremely tacky. Its high film strength and tenacious adherence to metal surfaces makes it perfect for all applications.

PENETRATING
LUBRICANTS

BEL-RAY NO-TOX® PL LUBRICANT
ISO GRADE: 20*

A superior penetrating lubricant, water white in color, odorless, tasteless and waterproof. Designed with excellent wear and rust protection.

BEL-RAY NO-TOX® PL PLUS LUBE
ISO GRADE: 7

Water white in color, odorless, tasteless and waterproof. A penetrating lubricant with lower viscosity. Designed with excellent wear and rust protection.

CIRCULATION

RAYLENE® ANTI-WEAR HYDRAULIC FLUID SERIES ISO GRADES: 22, 32, 46, 68, 100

A superior anti-wear fluid designed to meet the requirements of modern high performance pumps and hydraulic systems.

PNEUMATICS

BEL-RAY PNEUMATIC TOOL LUBRICANT 100 ISO GRADE: 22

Designed for severe service in oil-lubricated pneumatic tools, controls and valves. Eliminates gummy, rusting and corrosive build-up.

BEL-RAY WST FLUID ISO GRADE: 10

An excellent low temperature lubricating fluid designed for use in pneumatic tools, controls and valves in cold temperature applications.

HYDRAULICS

RAYLENE® ANTI-WEAR HYDRAULIC FLUID SERIES ISO GRADES: 22, 32, 46, 68, 100

A high performance anti-wear fluid designed to meet the requirements of modern high performance pumps and hydraulic systems operating under high loads or exposed to broad temperature ranges.

RAYLENE® ANTI-WEAR HYDRAULIC FLUID LT SERIES ISO GRADES: 7, 15, 22, 32, 46, 68

Superior anti-wear fluid designed to meet the requirements of modern high performance pumps and high pressure hydraulic systems operating under low temperature ranges.

RAYLENE® MULTI-VIS HYDRAULIC OIL 520 ISO GRADE: 46

Approved by Racine, designed for high and low pressure hydraulic systems that require a high performance multi-viscosity oil for a broad range of temperatures.

CHAINS

BEL-RAY TENTERLUBE RL SERIES ISO GRADES: 100, 150, 220

A series of specialized high temperature chain fluids for oven temperatures above 190°C (375°F).

BEL-RAY BAKERYLUBE SERIES

A series of unique oven chain lubricants that are made of a mixture of graphite powders and fluid, designed to lubricate bakery chains at varying temperatures.

MOLYLUBE® 108-5C SERIES ISO GRADES: 68, 150, 220, 410*

An outstanding synthetic lubricant containing molybdenum disulfide, anti-wear and extreme pressure additives for high temperature applications.

BEL-RAY EPO SERIES ISO GRADES: 150, 220, 460

A series of superb synthetic chain lubricants designed for extreme pressure and high temperature applications.

BEL-RAY HI TEMP LUBRICANT 81 ISO GRADE: 200*

A specially formulated synthetic high temperature chain lubricant for use in ovens up to 260°C (500°F).

CHAINS (AEROSOL)

BEL-RAY WATERPROOF CHAIN LUBE AEROSOL

A heavy duty, long lasting oil for chains and bearings operating in wet environments. Available in bulk.

BEL-RAY 6 IN 1® AEROSOL

An excellent light viscosity, multi-purpose penetrating fluid and chain lubricant for light duty applications. Available in bulk.

COMPRESSOR/
VACUUM PUMPS

BEL-RAY COMPUVAC SERIES ISO GRADES: 46, 68, 100, 150

A high performance compressor oil designed for centrifugal and reciprocating compressors as well as most vacuum pumps.

BEL-RAY DEB COMPRESSOR LUBE SERIES ISO GRADES: 32, 46, 68, 100, 150

A superior diester based synthetic compressor oil specifically formulated for rotary and screw type compressors.

ENCLOSED GEARS

RAYLENE® EP LUBRICANT SERIES ISO GRADES: 68, 100, 150, 220, 320, 460

A high performance, extreme pressure, multi-service gear lubricant, formulated for heavy duty applications.

BEL-RAY 100 GEAR OIL SERIES ISO GRADES: 52*, 150, 220, 320, 460, 680, 1000, 1500

An excellent extra heavy duty gear lubricant formulated for all types of gearing. Effective for plain and roller bearings operating under severe temperature ranges and loads.

BEL-RAY SE2 LUBE SERIES ISO GRADES: 15, 22, 46, 100, 120*, 150, 280*, 460, 680, 1000, 1500

A technologically innovative synthetic extra heavy duty gear lubricant formulated for all types of gearing under severe temperatures and load. Effective for plain and roller bearings.

BELEX POLAR GEAR OIL SERIES ISO GRADES: 150, 220, 460, 1000

A series of outstanding heavy duty gear lubricants designed for all types of gearing where severe temperature, water resistance and severe load protection is needed.

WORM GEARS

BEL-RAY HP WORM GEAR OIL ISO GRADE: 460

A high performance, extreme pressure, compounded lubricant designed for use in worm gear boxes where a hardened steel worm typically engages a bronze gear.

BEL-RAY STEAM CYLINDER OIL 150 ISO GRADE: 460

A superior heavy duty, compounded lubricant designed for use in steam cylinders, worm gearboxes, couplings and bearings.

OPEN GEARS

MOLYLUBE® GEAR TAC SERIES

A high performance, high viscosity, open gear lubricant designed for open gears of all sizes, operating under normal to severe conditions where asphaltic type open gear lubricants are not desirable.

MOLYLUBE® SF 100 SERIES

A functionally diverse, multi-service open gear lubricant that provides all season serviceability without using chlorinated solvents. For use in all open gears, bushings, rollers, rails and anti-friction bearings.

BEL-RAY ALO OPEN GEAR GREASE SERIES NLGI GRADES: 00, 0, 1

A series of asphaltic open gear lubricants designed for heavily loaded open gears and sliding surfaces. Useful for broad temperature ranges.

Call 1-732-938-2421 or visit our web site at www.belray.com to submit a TSQ (Technical Service Query) for assistance in grade or product selection.



BEARINGS



TERMALENE® GREASE SERIES
NLGI GRADES: 1, 2

A unique waterproof aluminum complex thickened grease. For all types of anti-friction and plain bearings under moderate to extreme pressure.

BEL-RAY PA GREASE SERIES
NLGI GRADES: 1, 2

A heavy duty PAO based synthetic grease designed with excellent extreme pressure, anti-wear and waterproof properties.

MOLYLUBE® 126 EP GREASE SERIES
NLGI GRADES: 0, 1, 2

A heavy duty aluminum complex thickened grease with molybdenum disulfide. Designed for extreme pressure, high film strength and water resistance.

TERMALENE® EP GREASE SERIES
NLGI GRADES: 0, 1, 2, 3

A heavy duty general purpose, aluminum complex thickened grease. Exceptional shock load performance. Designed for heavy loads and wide temperature ranges. Virtually waterproof.

TERMALENE® BALL & ROLLER BEARING GREASE
NLGI GRADE: 2½

A unique blend of aluminum and sodium complex thickeners. Provides shear and thermal stability, high film strength and the excellent mobility needed in ball and roller bearings. Exceptional performance for electric motor bearings.

BEARINGS
HIGH TEMPERATURE

BEL-RAY SC 2500 EP GREASE SERIES
NLGI GRADES: 1, 2

An extreme pressure sodium complex thickened grease. Excellent load carrying capabilities. Offers thermal and mechanical stability for higher temperature applications.

BEL-RAY AMBER EP GREASE SERIES
NLGI GRADES: 1, 2

An excellent extreme pressure, non-melting grease. Performs in low and high temperature ranges as well as in wet environments.

BEL-RAY 565 HT GREASE
NLGI GRADE: 2

An extreme pressure sodium complex thickened grease. Designed for high temperatures. Excellent load carrying capabilities and thermal and mechanical stability.

MOLYLUBE® PA GREASE SERIES
NLGI GRADES: 1, 2

A heavy duty PAO based synthetic grease, designed with molybdenum disulfide. Excellent extreme pressure, anti-wear, thermal stability and waterproof properties for normal to heavy loads.

BEL-RAY 1030 GREASE
NLGI GRADE: 1

A heavy duty, non-melting silicone based grease. Designed for harsh chemical environments. Excellent extreme pressure, anti-wear, thermal stability and waterproof properties.

BEL-RAY PFET GREASE SERIES
NLGI GRADES: 1, 2

A synthetic based lubricant designed for difficult chemical environments. Completely insoluble in most solvents and non-reactive in the presence of concentrated oxygen and chlorine. A true safety grease.

MOLYLUBE® 65 GREASE
NLGI GRADE: 1

A synthetic high temperature grease with molybdenum disulfide, designed specifically for extended lubrication cycles in heavily loaded applications.

BEARINGS
LOW TEMPERATURE

TERMALENE® 80 GREASE
NLGI GRADE: 2

An aluminum complex thickened, general purpose grease, designed for bearings operating at high speed, low temperature and low torque. Virtually waterproof.

ANTI-SEIZE
COMPOUNDS

MOLYLUBE® ANTI-SEIZE
NLGI GRADE: 2

A non-melting anti-seize lubricant, designed for extreme pressure, heavily loaded applications requiring low break away torque. Virtually waterproof.

BEL-RAY ANTI-SEIZE 2000
NLGI GRADE: 1

An outstanding aluminum complex based anti-seize compound containing finely divided soft metals for thread and static parts exposed to temperatures up to 1100°C (2000°F).

PENETRATING
LUBRICANTS

BEL-RAY 6 IN 1®
ISO GRADE: 2

A water displacing penetrating lubricant with multiple uses. Its extreme pressure additives provide high film strength. Cleans as it lubricates and provides excellent rust protection.

DRY FILM
LUBRICANTS

MOLYLUBE® SPRAY COATING

A dispersion of molybdenum disulfide in a selected blend of solvents. A dry film lubricant offering excellent rust protection, high film strength and outstanding metal protection.

MOLYLUBE® N

An inorganic dry film lubricant, designed for applications exposed to very high and low temperatures. The aqueous liquid, once dried, has a very tenacious adherence to metal surfaces.

MOLYLUBE® 16

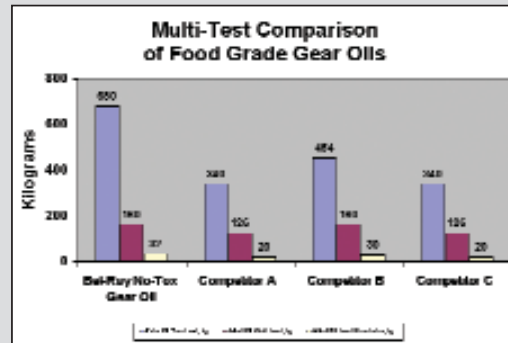
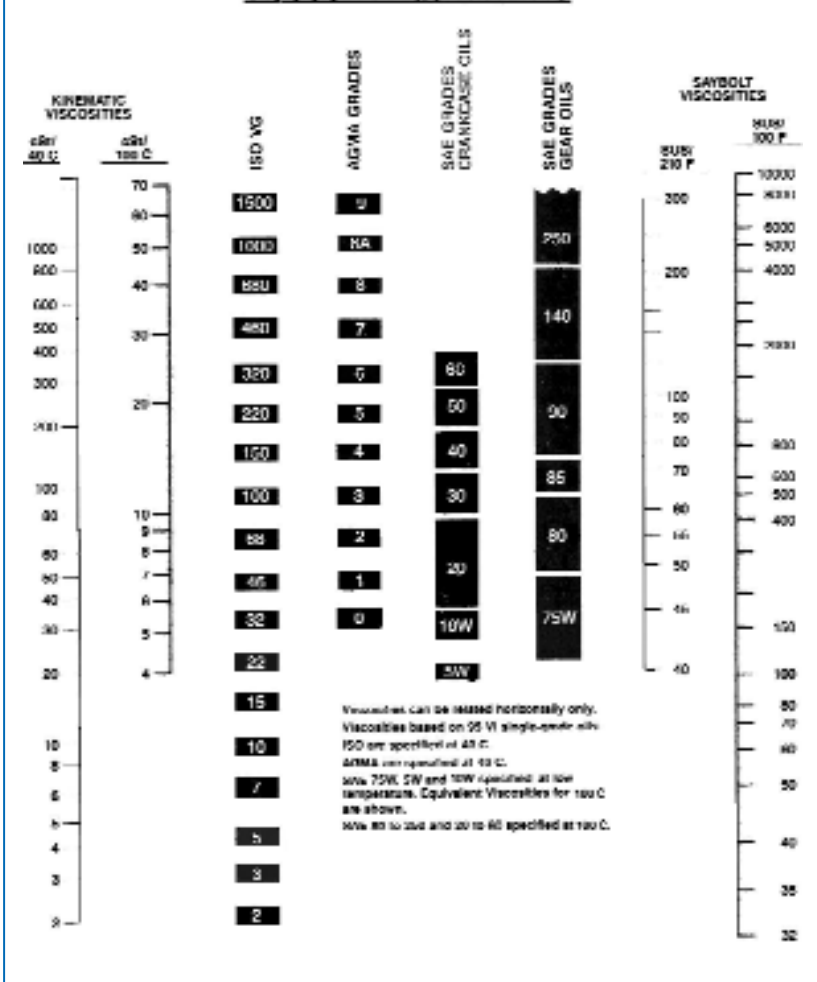
Specially treated molybdenum disulfide powders designed as a dry film lubricant.

BEL-RAY® INDUSTRIAL LUBRICANTS

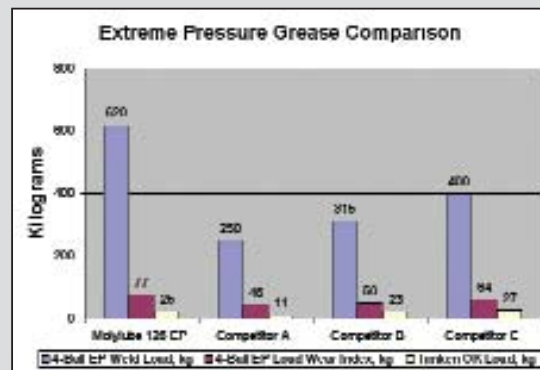
TOTAL PERFORMANCE SERVICE

- Complete lubrication audits
- Detailed equipment lubrication surveys
- Lubricant consolidation
- Recommended best product and practices
- Extended drain cycles
- Extended equipment service life
- Waste reduction
- Sampling intervals
- Changeout procedures
- Lubricant storage and handling
- Proper lubricant application
- Environmentally safe alternatives
- Technical Service Query (TSQ) Hotline
- Condition monitoring
- Hazardous analysis of critical control points
- Lubrication management
- Exceptional Customer Service
- ISO 9001 Certification
- Global distribution
- OEM approvals
- Cutting edge research and development

VISCOSITY EQUIVALENTS



Bel-Ray remains true to its Mission Statement of providing innovative technology resulting in superior performance and value in Bel-Ray No-Tox Gear Oil. This can be seen in this gear oil "multi-test" comparison chart. With the highest true load in ASTM D3233B Falex Pin & Vee Block Test, the highest Weld Load and Load Wear Index in ASTM D2783 4-Ball EP Test, Bel-Ray No-Tox Gear Oil is the exception in the lubrication of machinery gear cases in food processing, pharmaceutical and beverage industries where incidental food contact may occur.



Molyube 126 EP Grease is a superior general purpose grease containing molybdenum disulfide. The extreme pressure performance of Molyube 126 EP Grease is exceptional at 620 Kg Weld Load and 77 Kg Load Wear Index on the ASTM D2596 4-Ball EP Test and 25 Kg (55 pounds) on the ASTM D2509 Timken Test. This chart demonstrates that Molyube 126 EP Grease, Bel-Ray's premier general purpose grease, surpasses the competition with respect to both extreme pressure and anti-wear capabilities.



Bel-Ray Company, Inc.
 P.O. Box 526
 Farmingdale, New Jersey 07727
 USA
 Tel: (732) 938-2421
 Fax: (732) 938-4232

www.belray.com